



PART 1: GETTING TO KNOW YOU

Hello! My name is Mrs Bennett. I am delighted to hear that you will be joining us in September.

I am the current Assistant Principal - Head of Key Stage 3 who is responsible for making sure you have a great start at secondary school. I have already started to hear great things about you from your primary school teachers. It seems your primary school teachers held very high expectations of you and are very proud of what you have achieved. My main role is to make sure we continue to have high expectations and goals for you all as you join us and continue your education and personal development at Bacon's College.

There will be two or three newsletters that will provide information to help you get to know Bacon's College and for us to get to know you too. These newsletters will include:

- Photos of key people at Bacon's College
- Bacon's Values
- Photos and videos of the school
- Policies and Procedures
- Some ideas about how you can prepare for transition to Bacon's College with answers to you questions
- Some tasks for you to complete to get a feel of what learning will be like at Bacon's.

My goal during this induction is to help you prepare for life at Bacon's College and how to be an exceptional Year 7 Bacon's College student. This week, I want to get to know you better. Use this link to fill in the questionnaire and tell us about yourself.

[CLICK HERE FOR THE QUESTIONNAIRE](#)

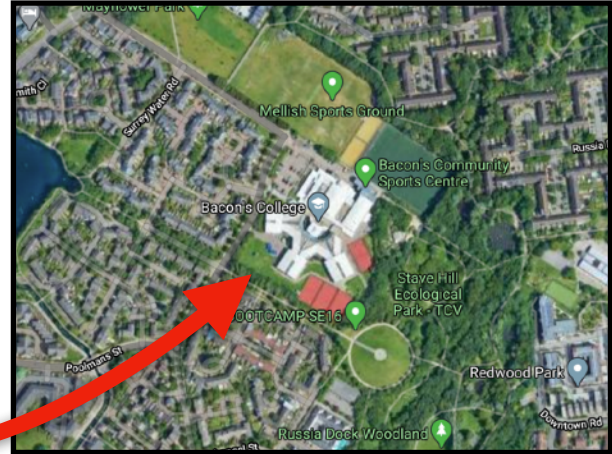
PART 2: BACON'S COLLEGE

Hello!

This part of the newsletter will allow you to build an understanding of who we are as Bacon's College.

Bacon's College was founded in 1703 by Josiah Bacon. In the past, we had two sites: Pages Walk and Grange Road.

In 1991, we moved to our current site on Timber Pond Road.



Bacon's College is part of a much larger group of schools called United Learning Trust, a group of schools providing excellent education to children and young people across the country and who aim to bring the 'best in everyone'.

Bacon's College ensures that every student is well educated, cared for and exhorted to achieve the academic and personal excellence that will lead to university or skilled work and to a fulfilled life, encapsulated in the words of John:

'I came to give life, life in all its fullness'
John 10:10

Bacon's College is a fully inclusive Church of England academy that is open to students of all faiths and none. Our Christian values, which are upheld by all members of our community, lie at the heart of our mission and ethos. They are: **Courage, Compassion, Respect, Faith and Integrity**

These are the values of a loving and compassionate God, seen in the teachings of our Lord Jesus Christ, and lived out through the Holy Spirit. We enrich student's lives with these values to inspire them to achieve academic and personal excellence.

COURAGE

The Bacon's Lion is the symbol of courage and strength.

A Bacon's student has the courage to follow their convictions, to challenge injustice, to persevere in order to succeed and to remain steadfast in the face of adversity.

"Be strong and courageous. Do not be terrified; do not be discouraged, for the Lord your God will be with you wherever you go"
Joshua 1:9

COMPASSION

Bacon's students follow Christ's example by giving generously to those in need, placing others before themselves, supporting each other and loving their neighbours.

"Love one another. As I have loved you, so you must love one another."
John 13:34-35

RESPECT

Bacon's students believe that everyone - regardless of race, faith, gender, sexuality or social status - is unique, special and loved by God. We respect all people as equals and without prejudice.

"Behold, how good and pleasant it is when brothers and sisters dwell in unity"
Psalm 133:1

FAITH

A Bacon's student draws strength and endurance from faith in family, staff and friends as well as from their own abilities and beliefs. We are a loyal school community.

"I have fought the good fight, I have finished the race, I have kept the faith."
1:2 Timothy 4:7

INTEGRITY

A Bacon's student acts with integrity in all their deeds and words. We are honest and admit to our mistakes. We achieve wholeness (integer) through being truthful and of good character.

"May integrity and honesty protect me, for I put my hope in you."
Psalm 25:21



COMPETITION

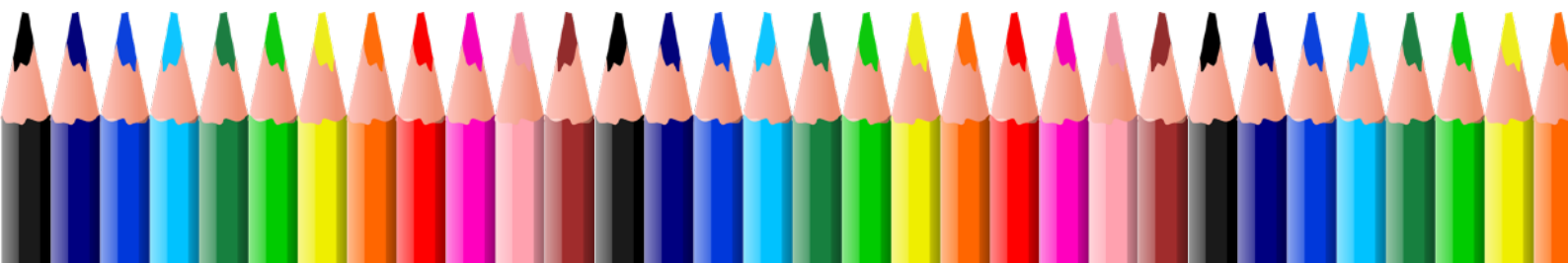
WIN £10 AMAZON VOUCHER!

Now that you have read all about our Bacon's Values, what do you think each value means?

We would like you to create a poster about the Bacon's Values to illustrate how you will demonstrate each value as a member of our school community.

Send your posters to transition@baconscollege.co.uk
by **Friday 20th June at 6pm.**

Keep your poster safe. You will need to bring your poster on your first day at Bacon's College. The poster will be used to decorate your tutor base.



BACON'S PRAYER

At the end of our assemblies, we come together to say the Bacon's Prayer.
Our Bacon's prayer includes our key values and brings us
together as a school.

Father, we ask that you will give to Bacon's, your gifts
of **FAITH** and **UNDERSTANDING**
of **COMPASSION** and **COURAGE**
of **INTEGRITY** and **RESPECT**
of **SEEKING** and **FINDING**

Help us to glorify you in all things,
to trust in your love for us,
and to live and work to your praise.
Amen



PART 3: PREPARING FOR LIFE AT BACON'S COLLEGE

Hello again!

This part of the newsletter will be helping you prepare for life at Bacon's College.

If any of the information in this newsletter changes, we will let your parents/guardians know.

In this newsletter you'll find information on the equipment you're going to need when you join us; a spot-the-difference on the correct uniform at Bacon's; a map of the school along with a video tour and news about our Anti-bullying Ambassadors applications.

EQUIPMENT

Having the right equipment each day is very important in ensuring you can complete your work. Here's what you need to bring with you:



Are you **lesson ready?**

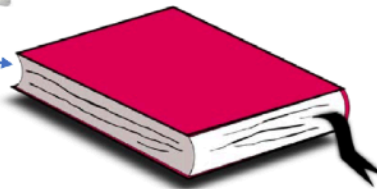
☐ Planner



☐ Pencil case



☐ Reading book



☐ Black pen



☐ Blue pen



☐ Green pen



☐ 2 sharp pencils



☐ Rubber



☐ Ruler



☐ Sharpener



☐ Glue



☐ Calculator



☐ Maths set



☐ Highlighters



☐ Chromebook
(Provided by the school)

Have you completed and packed your homework, exercise books and folders for today's lessons?

☐ Period 1

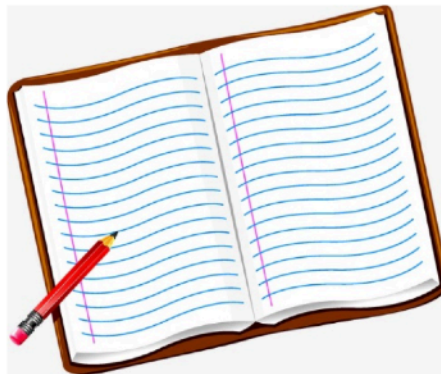
☐ Period 2

☐ Period 3

☐ Period 4

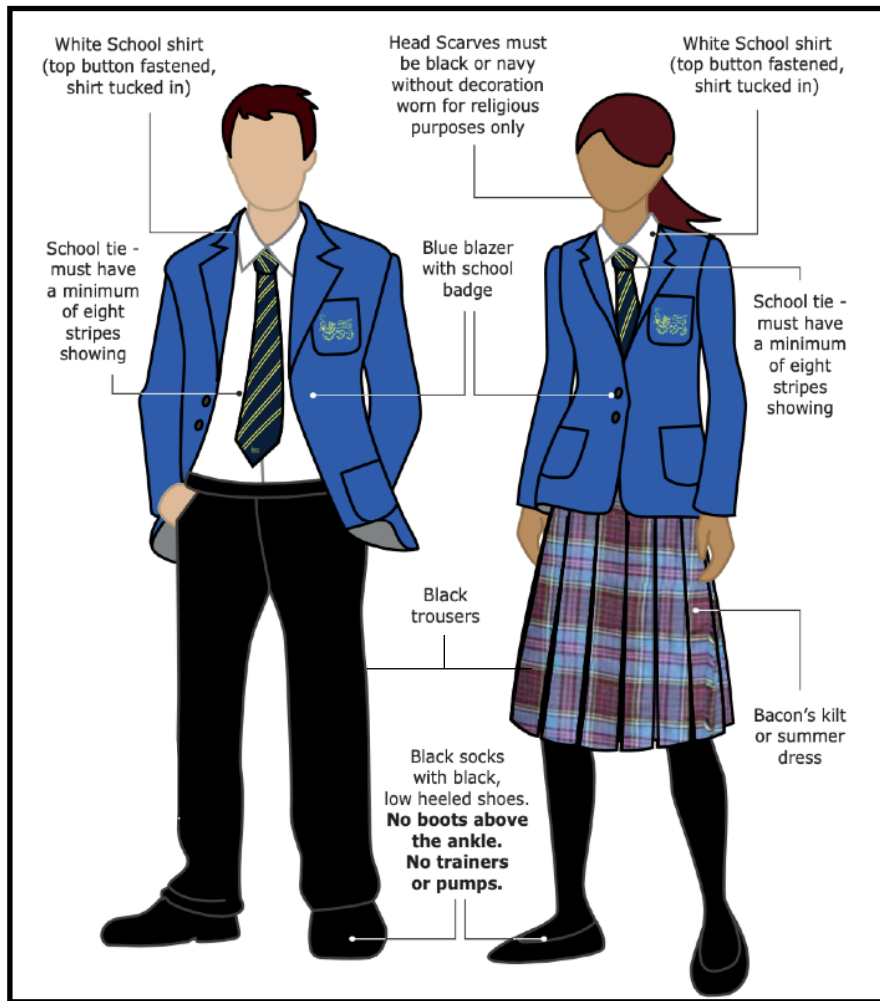
☐ Period 5

☐ Period 6



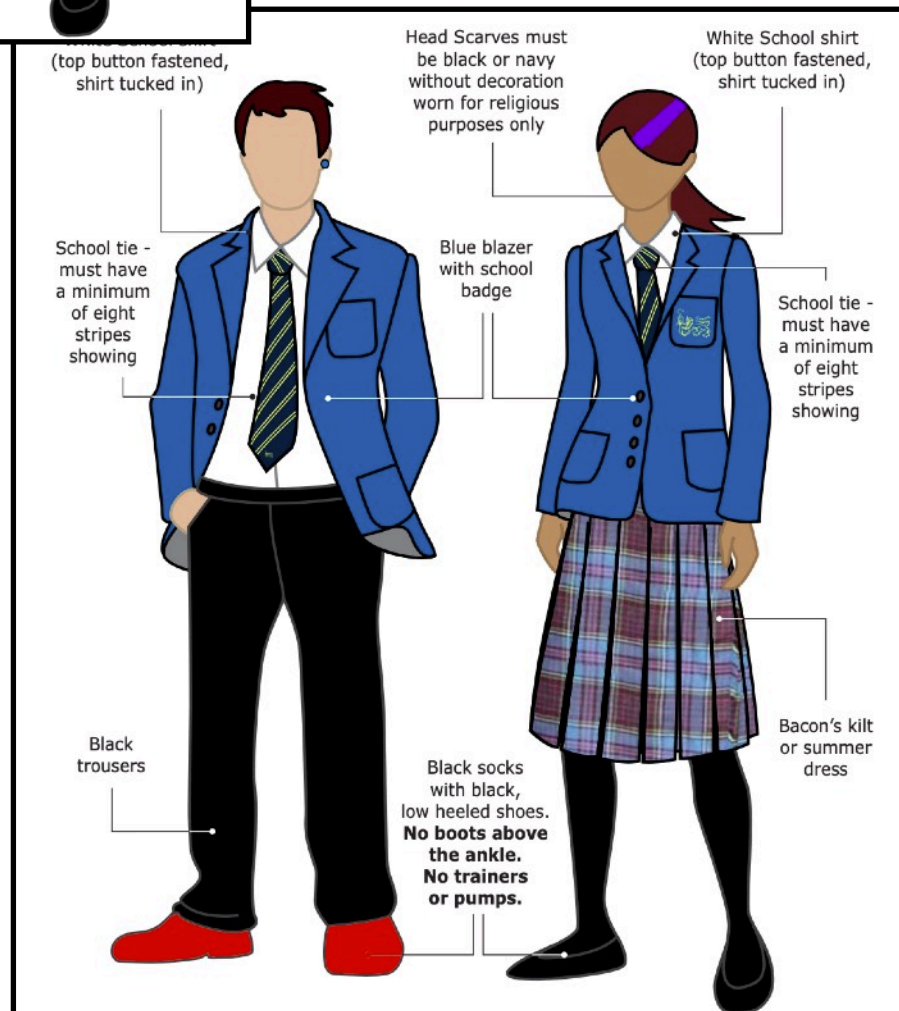
Tip: Check this the night before!

UNIFORM



All our students at Bacon's College take pride in their appearance and uniform. Here are illustrations of our uniform - We've also included an image with students wearing the wrong uniform!

Can you spot 5 difference between the images?



- Hair must be kept clean and tidy and be of a natural colour. No rainbow colours including grey. Hair bands must be black, blue or white only.
- Close shaving of heads is not acceptable (i.e. below a number one) and patterns are not to be shaved in to hair or eyebrows.
- Other than VI Form students, no jewellery is to be worn (with the exception of one set of small studded earrings) including rings on health and safety grounds.
- Belt buckles must be modest and not excessively large or garish.
- Extensions, if worn, must be black, brown or burgundy.

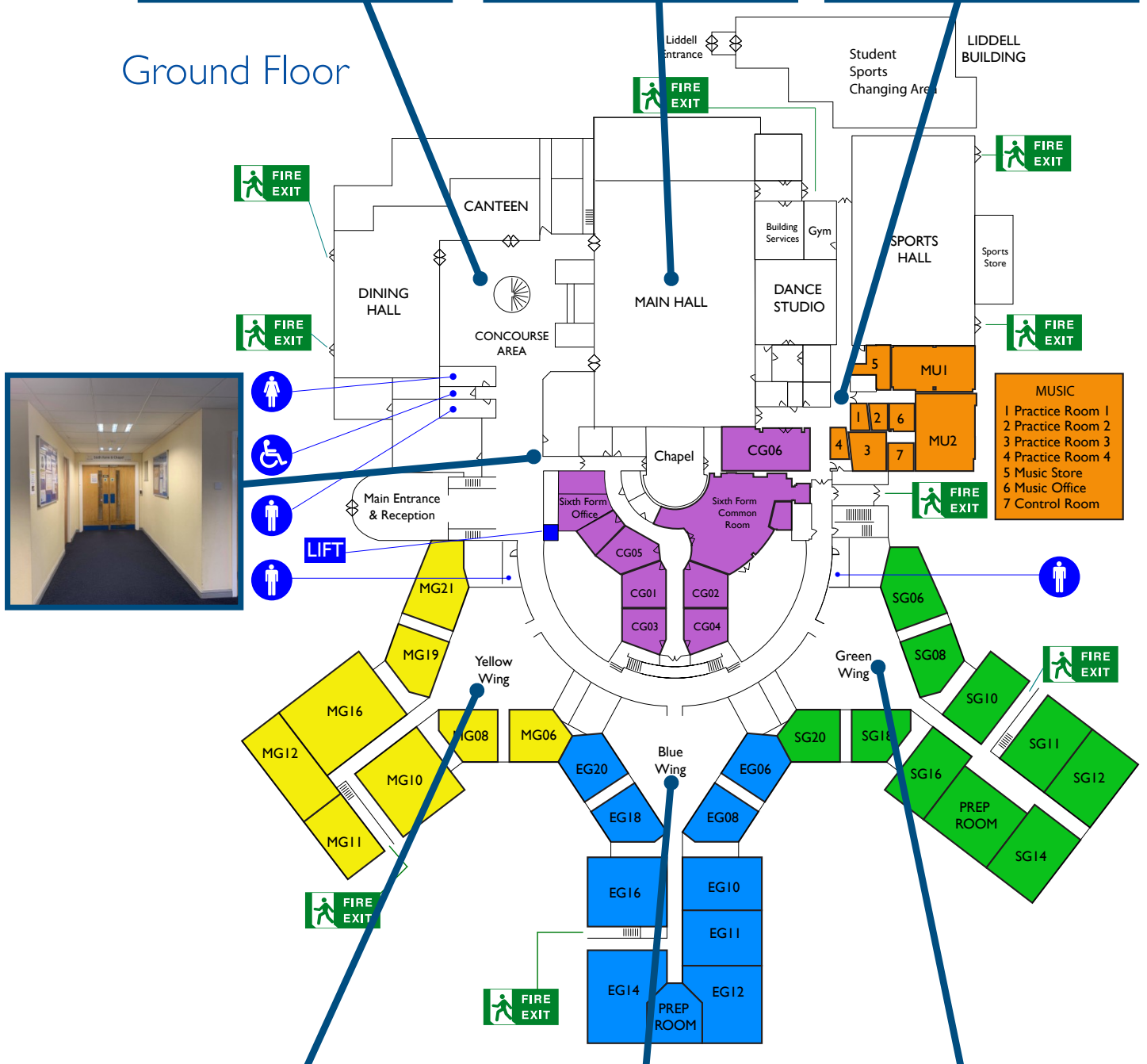
We also have a PE kit. Students are to bring their PE kits to every lesson. This includes:

- Bacon's PE polo shirt
- The blue socks
 - Students are also able to wear plain white socks for P.E.
- The blue shorts
- Suitable trainers/astro boots (no converse/vans/flat soled shoes)
- Navy/silver track bottoms and 1/4 zip top (optional but recommended for cold weather)

SCHOOL MAP

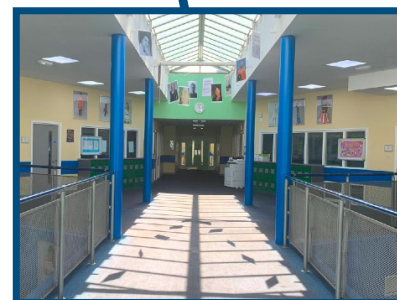
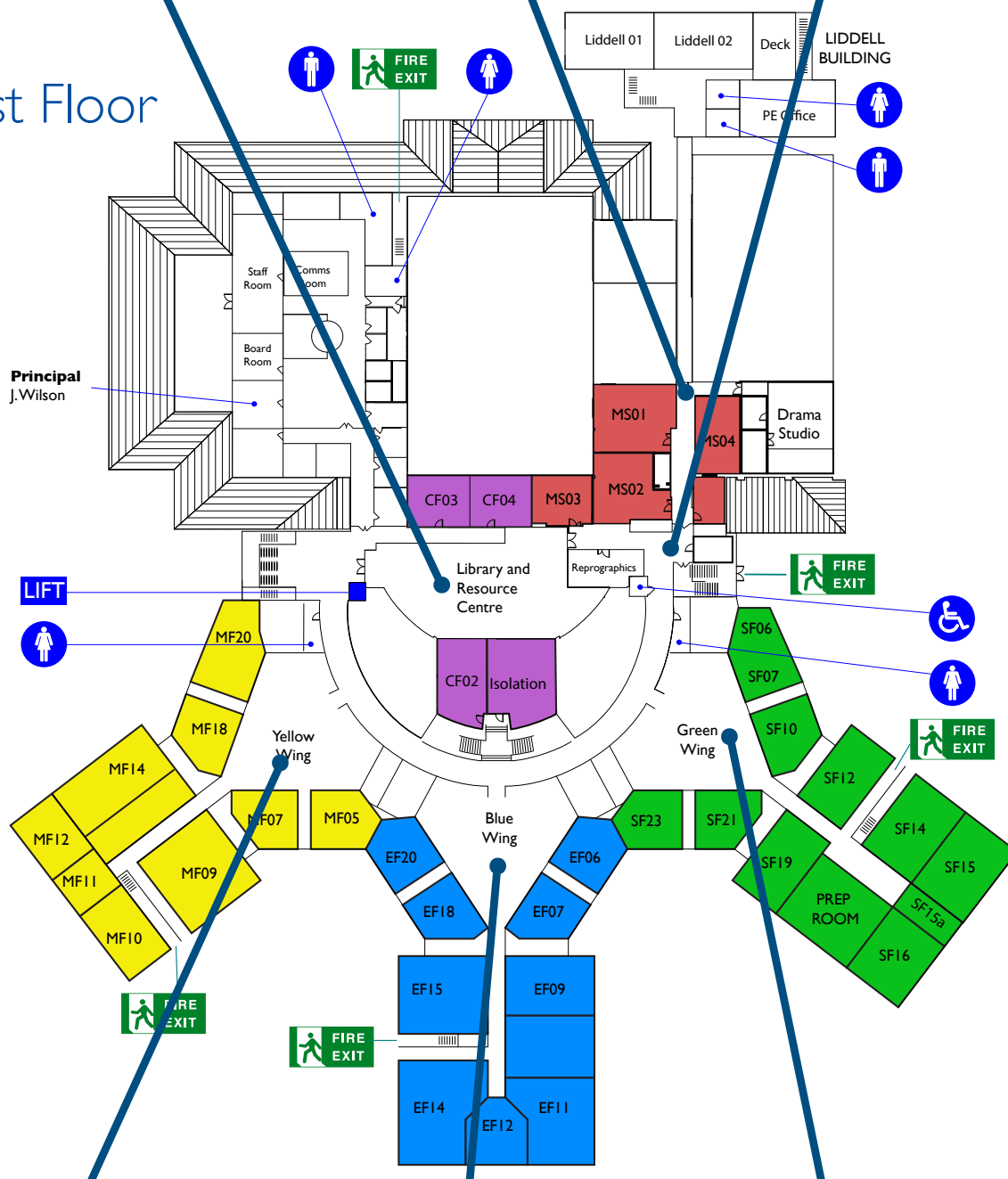


Ground Floor





First Floor



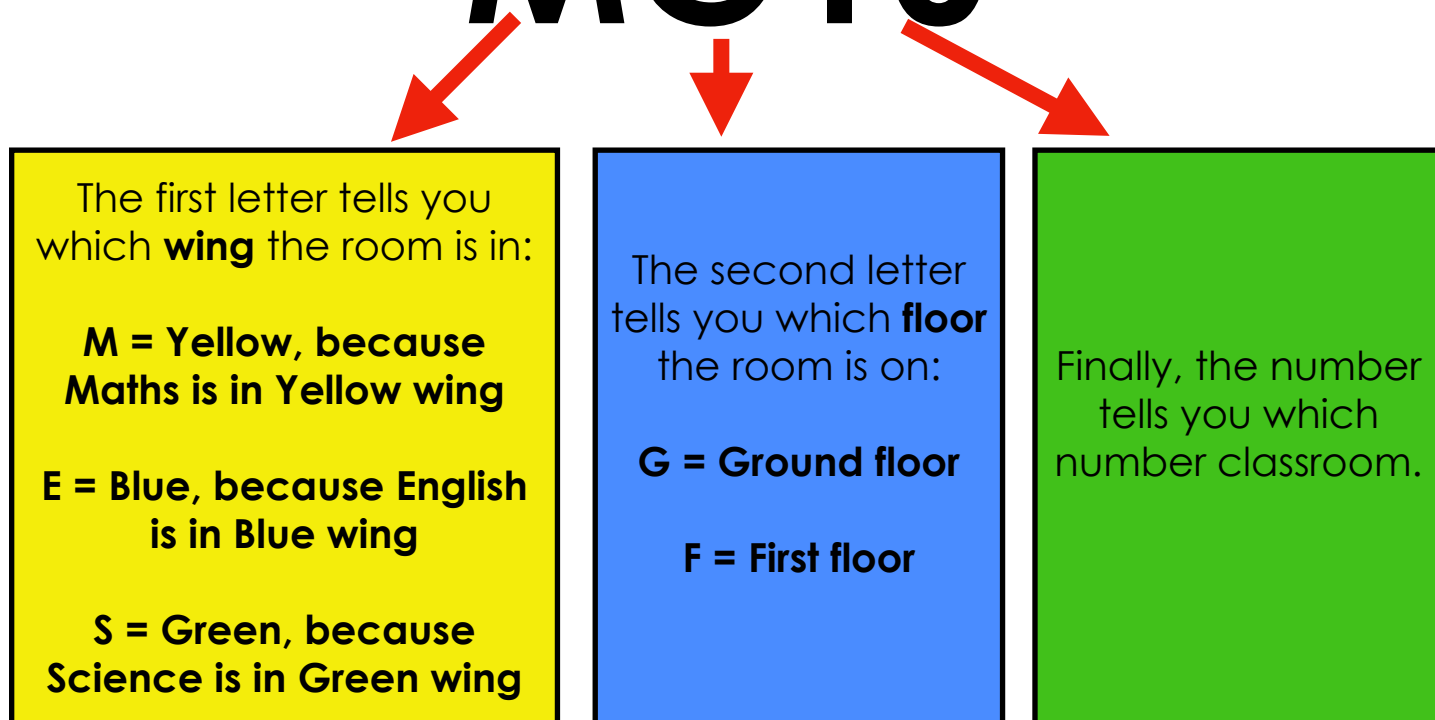
Click on any of the images to view that part of our video tour,
or click [here](#) to view the whole tour.

Figuring out where a room is:

When you join us in September, you will receive a timetable telling you where each of your lessons takes place. Figuring out where a room is will be very important!

Your classroom might be listed as **MG10**, but how do you figure out where MG10 is?

MG10



Important notes!

- Sometimes you might find you have a lesson like history in a **different wing** to where most history lessons take place! Don't worry, if you pay attention to your timetable you will always be able to find your way around!
- PE Lessons** can take place in the sports hall, the main hall, the dance studio, the fields behind the school or the courts in the playgrounds. PE is based in a separate building, the Liddell Building. Can you spot this on the maps?
- Moving around the building, we **always walk on the left side** of the corridor, and some of the **staircases are one-way only!**

OUR SCHOOL DAY

Our school day runs from 8.30am to 3.05pm on Monday and Thursday. On Tuesday and Wednesday we have an extended school day until 3.50pm. On Fridays we finish at 2.35pm.

8.25 - 9.00 am	Tutor Time/Assembly
9.00 - 9.50 am	Period 1
9.50 - 10.40 am	Period 2
10.40 - 11.00 am	Break
11.00 - 11.50 am	Period 3
11.50 am - 12.40 pm	Period 4
12.40 - 1.25 pm	Lunch
1.25 - 2.15 pm	Period 5
2.15 - 3.05pm	Period 6
3.00 - 3.50pm	Period 7/IST (Tuesday & Wednesday)

ANTI-BULLYING AMBASSADORS

One of the Bacon's values is '**respect**'.

At Bacon's College, we respect everyone. We do not tolerate bullying. I would like to open the applications for any student who would like to become an '**Anti-Bullying Ambassador**' for the Year 7.



If your application is successful, you will be working closely with other Anti-Bullying Ambassadors in the school to raise awareness about the impact of bullying.

If you would like to become an 'Anti-Bullying Ambassador', write a paragraph explaining to me why you want to be a Year 7 Anti-bullying ambassador and how you think we can raise awareness about the impact of bullying.

Applications close Friday 20th July at 2pm. Please send your application to schooloffice@baconcollege.co.uk